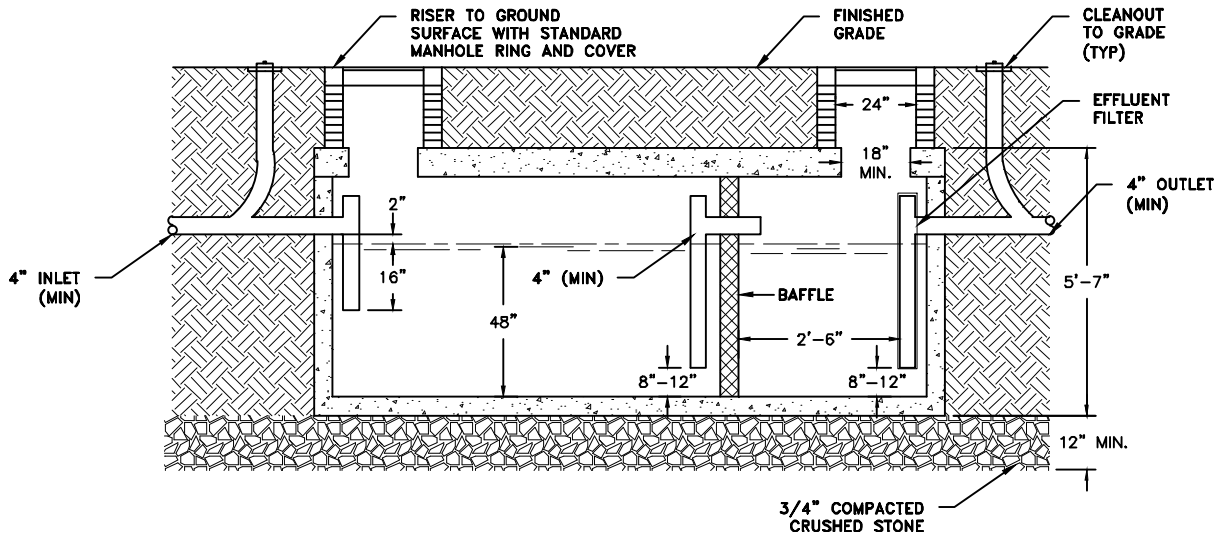


PLAN



ELEVATION

NOTE:
INLET INVERT SHALL BE AT LEAST TWO INCHES ABOVE THE OUTLET INVERT.

TYPICAL UNDERGROUND GREASE TRAP DETAIL

REVISIONS
1/16 - MSG EDITS

AMERICAN WATER MILITARY SERVICES GROUP
CIVIL
TYPICAL UNDERGROUND GREASE TRAP
DETAIL

AMERICAN WATER MILITARY SERVICES GROUP
MT LAUREL, NJ 08054

AMERICAN WATER M.S.G.
330 FELLOWSHIP ROAD
MT LAUREL, NJ 08054



DRAWN BY Z. ALAM
PROJECT ENG'R J. DERUSSO
APPROVED

DATE 04-30-2010
PROJECT N/A

USE DIMENSIONS ONLY
SCALE N.T.S.

USE APPROVED DRAWINGS ONLY
FOR CONSTRUCTION PURPOSES

MSG-WW-21

FINAL

MSG-WW-21