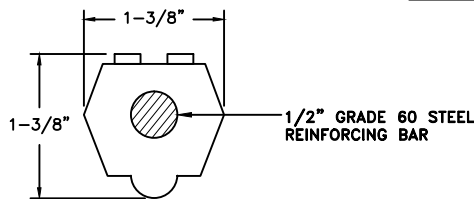


ELEVATION

PLAN



STEP REINFORCING BAR DETAIL

MANHOLE STEPS DETAIL

NOTES:

1. MANHOLE STEPS ARE NOT PERMITTED IN TEXAS AND OKLAHOMA.
2. ALL STEPS MUST MEET ASTM C-478 AND ASSHTO M-199 SPECIFICATIONS, POLYPROPYLENE ASTM D-40104, THE 1/2" GRADE 60 DEFORMED REINFORCING BAR ASTM-A-615.
3. INSTALLATION METHOD MUST RESIST 1,500 LB HORIZONTAL PULL OUT FORCE AND 500 LB VERTICAL LOAD.
4. LOCATE STEPS OVER BENCH WHENEVER POSSIBLE (NOT OVER THE MAIN).

REVISIONS
6/13 - MSG EDITS

AMERICAN WATER MILITARY SERVICES GROUP
 CIVIL
 MANHOLE STEPS
 DETAIL

AMERICAN WATER MILITARY SERVICES GROUP
 MT LAUREL, NJ 08054

AMERICAN WATER M.S.G.
 330 FELLOWSHIP ROAD
 MT LAUREL, NJ 08054



DRAWN BY Z. ALAM
 PROJECT ENGR J. DERUSSO
 APPROVED

DATE 04-30-2010
 PROJECT N/A

USE DIMENSIONS ONLY
 SCALE N.T.S.

USE APPROVED DRAWINGS ONLY
 FOR CONSTRUCTION PURPOSES

MSG-WW-13

FINAL

MSG-WW-13