



# TURN ON THESE TIPS

## WHEN PREPARING FOR SPRING

### OUTDOOR WATER WISE

These tips can save you thousands of gallons of water while keeping your lawn fresh in time for spring.



As per Nassau County law, all irrigation contractors must be licensed by the Nassau County Department of Consumer Affairs.

When selecting a contractor, make sure they have a Nassau County Home Improvement License.

#### DID YOU KNOW?

🕒 The average family can reduce their water usage by 20% or more during irrigation season by replacing a standard clock timer controller with a WaterSense labeled model. While shopping for a new irrigation controller, look out for that WaterSense label.

#### GET SMART

🕒 Consider investing in a smart sprinkler or irrigation controller. These systems help reduce water use by timing watering based on localized weather, soil moisture, plant type and more.



**An irrigation controller's rain sensor typically lasts five to ten years. Time flies, it may be time to replace your rain sensor.**

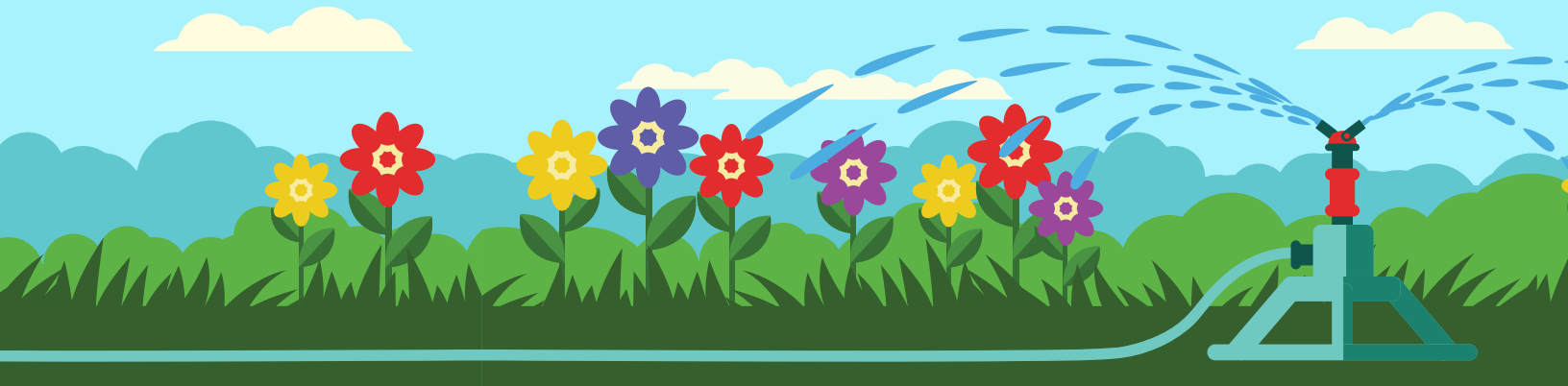
Let mother nature water your lawn. Just make sure your rain sensor is set to ACTIVE.

**This spring, make sure you test your cork-disk rain sensors by taking the following steps:**

- ✓ Turn on the watering zone closest to your rain sensor on your irrigation controller.
- ✓ Observe your sprinkler heads in the zone you turned on. They should start emitting water onto the lawn.
- ✓ Press and hold the button on the top of your rain sensor. The water should stop flowing from the sprinkler heads.
- ✓ Release the button on top of the sensor. Water should start flowing from the sprinkler heads again; however, this does vary by model, so please defer to your instruction manual.
- ✓ If the system does not shut off or come back on, check for wiring problems. The device may have to be repaired or replaced. Check the instruction manual or manufacturer's website for additional information about your specific brand and model rain sensor.
- ✓ Installing a rain sensor is highly recommended. Rain sensors are designed to shut off sprinkler systems when rainfall reaches a preset amount, usually 1/4 inch. Once the moisture level subsides, the sensor re-enables the sprinkler system, resuming the previous watering schedule. Rain sensors should be mounted in an unobstructed area exposed to open sky.



\*Please note, there may be a cost associated with this service if you work with an irrigation contractor.



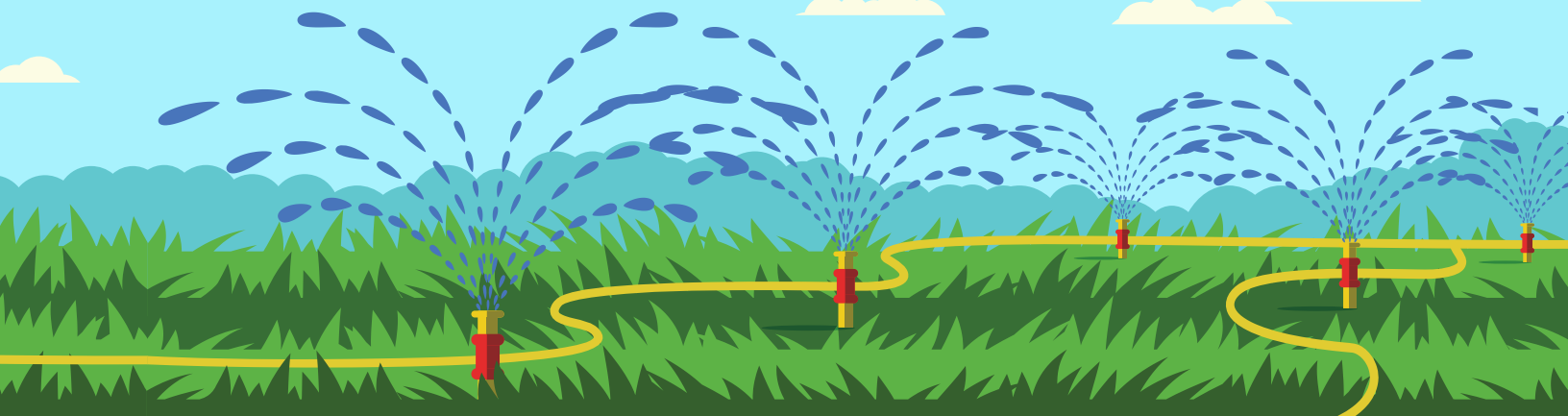
## SPRING START-UP CHECK LIST



**Spring is the time to start checking your sprinkler system for peak summer performance. Here's what to do to keep your system operating efficiently:**

- ✓ **Run the entire sprinkler system, one zone at a time.** As you do this, check for the following:
  - Signs of leakage, especially damage to sprinkler heads or piping which could have occurred over the winter. Repair and replace as needed.
  - Accurate spray patterns. Adjust your sprinkler heads so they water your landscape and not sidewalks or pavement. Also make sure their spray isn't blocked by plants or other materials.
  - Clean clogged nozzles and sprinkler heads.
- ✓ **The sun is out, and spring is here, but the ground is still wet from winter.** You don't need to turn on your irrigation system to full capacity. Instead, slowly increase your irrigation frequency and duration with peak capacity reserved only for those hot, dry months of summer.
- ✓ **Have the cross-connection assembly, or back flow, tested by a state-certified tester.** Contact your local water provider for specific information on rules and regulations—be sure to ask for the cross connection or back flow specialist.

**As of January 2018, according to the Ordinance Amendment No. 181-2016 of the Nassau County Department of Consumer Affairs to the Irrigation Ordinance No. 248-A-1987,** irrigation systems shall NOT be activated unless the system is equipped with the properly installed soil moisture devices, rain sensor devices, ET/smart controllers and/or any other types of technology that inhibits or interrupts the system during periods of moisture.



### Every Drop Counts.

This spring, New York American Water is here to help you save money while maintaining the look of your lawn. This guide will help you get started on easy-to-implement tips on how to use water wisely.

**For more information, check out our H2O Control Conservation Program at [newyorkamwater.com/conservation](http://newyorkamwater.com/conservation)**



NEW YORK  
AMERICAN WATER

H<sub>2</sub>OCONTROL